

# Toad™ Data Point

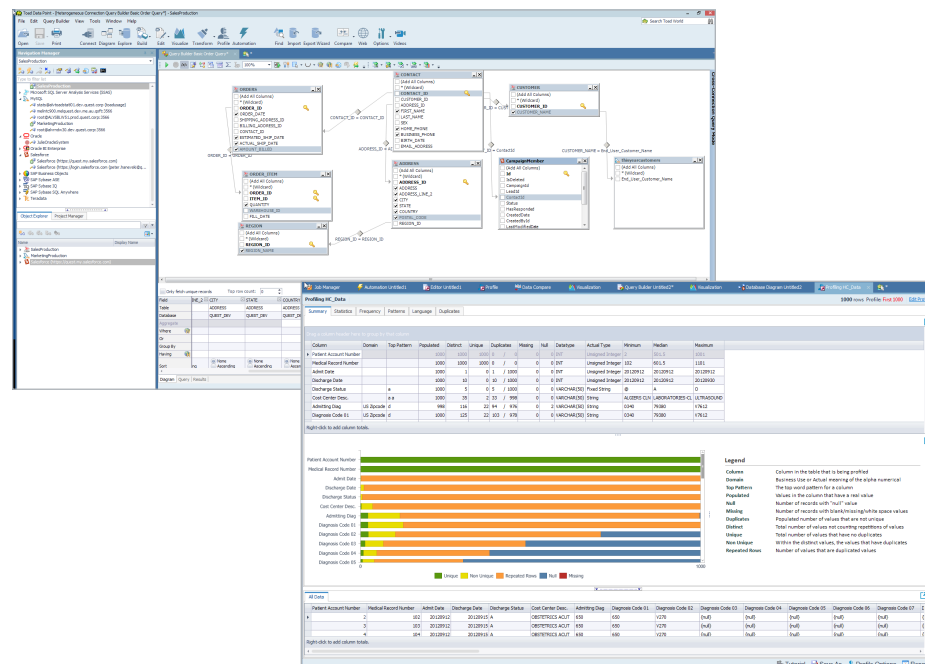
The right data analysis tool to access, integrate and provision data.

The usefulness of your organization's data lies in your ability to access, integrate and provision it. But those tasks are becoming increasingly complex. The variety of data sources and the amount of data with which you must work are growing every day. You need a single, easy-to-use tool that enables you to access all your data sources, from relational databases and non-database sources to non-SQL systems and the cloud.

Toad™ Data Point is a cross-platform query and data integration tool that simplifies data access, analysis and provisioning. It provides nearly limitless data connectivity, desktop data integration, visual query building and workflow automation.

Toad Data Point enables you to quickly and easily access, query and provision data. It includes the ER diagrammer, visual query builder, SQL editing, charts and graphs, Excel reporting, compare and synch, as well as automation and scheduling. It also includes local storage to integrate disparate data sources, build transformation and cleansing routines, and improve analysis with data visualizations.

With Toad Data Point, you can easily access and work with traditional RDBMS data like Oracle, Microsoft, Sybase and DB2, as well as data stored in non-traditional sources like Salesforce.com, Business Objects and Oracle Business Intelligence Enterprise Edition (OBIEE), as well as NoSQL sources like Hadoop,



Easily access, prepare, analyze and share data from any source.

"I need to write queries against all our different database platforms. Toad Data Point saves me time because I'm not hopping around to different tools. I just open Toad Data Point in the morning and I don't have to ever leave it."

James McGregor  
BI Administrator  
Zions Bancorporation

## Benefits:

- Connect to and run queries against nearly any data source
- Develop advanced single-platform and cross-platform SQL queries through an easy-to-use drag and drop interface
- Automate and schedule routine tasks to increase your productivity
- Transform and cleanse your result sets (add calculations, columns and groupings, find duplicates and more)
- Access advanced mathematical and statistical functions through SQL

## System requirements

### Hard disk space

1.33GB to install Toad

475MB to run Toad Professional Edition, 350MB to run Toad Base Edition

*Note: The disk space required may vary based on the edition of Toad selected for installation.*

### Platform

2GHz recommended minimum

1GB of RAM minimum, 2GB recommended

### Memory

*Note: The memory required may vary based on the following:*

- Applications that are running on your system when using Toad
- Size and complexity of the database
- Amount of database activity
- Number of concurrent users accessing the database

### Operating systems

Windows Server 2008 (32-bit or 64-bit) and 2012

Windows 7 (32-bit and 64-bit), Windows 8 (32-bit and 64-bit), Windows 8.1 (32-bit and 64-bit)

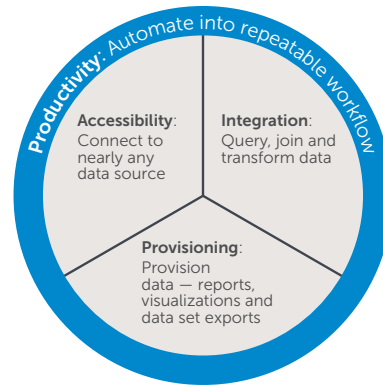
### .NET framework

The Microsoft® .NET Framework is required. The version is dependent on the operating system.

Teradata .NET Data Provider — you must install Teradata .NET Data Provider (13.10 or later) to use a Teradata native connection in Toad

### Data sources

For a complete list of data sources, please visit [software.dell.com/products/toad-data-point/](http://software.dell.com/products/toad-data-point/).



Cassandra, MongoDB, SimpleDB and DynamoDB. And with Toad Data Point's powerful functionality, you can easily perform advanced analytics using a library of 170+ analytical functions and mathematical algorithms.

## Features

**Limitless connectivity** — Connect to nearly any data source, including RDBMS sources like Oracle, SQL Server, Sybase, Sybase IQ, Sybase SQL Anywhere, DB2, Teradata, MySQL, Access and any ODBC-compliant platform, as well as NoSQL sources like Salesforce.com, Hadoop, Cassandra, MongoDB, SimpleDB, DynamoDB and BI sources like OBIEE, Business Objects and Microsoft Analysis Services.

**Automation engine** — Automate and schedule routine tasks to increase your productivity; develop sophisticated workflows to support advanced projects.

**Compare and sync** — Compare and synchronize data between different data sources to ensure consistency and validity.

**Charts and reports** — Design professional charts and graphs to share your data results.

**Import/export utility wizard** — Load and unload data efficiently. Easily export and publish data to Excel, .CSV, .TXT, HTML, PDF and a variety of other file formats.

**Available in professional edition:**  
**Non-traditional data sources** — Access and work with data sources including Salesforce.com, Business Objects and OBIEE.

**Data integration** — Simplify data integration through cross-platform SQL queries.

**Local data store** — Capitalize on the embedded database to become more flexible and agile with your data sets.

**Data cleansing area** — Transform and cleanse your result sets (add calculations, columns and groupings, find duplicates and more) with a straightforward interface.

**Data visualization** — Navigate interactive data visualizations to better understand your result sets.

**Data profiling** — Visually profile and sample database tables and data sets for patterns, unique values, duplicates, missing information, min./max. values and more.

**Available in professional edition with advanced analytics:**

**Advanced analytics library** — Access advanced mathematical, statistical functions and text algorithms through SQL.

## About Dell Software

Dell Software helps customers unlock greater potential through the power of technology—delivering scalable, affordable and simple-to-use solutions that simplify IT and mitigate risk. This software, when combined with Dell hardware and services, drives unmatched efficiency and productivity to accelerate business results. [www.dellsoftware.com](http://www.dellsoftware.com).

## Dell Software

5 Polaris Way, Aliso Viejo, CA 92656 | [www.dell.com](http://www.dell.com)  
If you are located outside North America, you can find local office information on our Web site.

© 2014 Dell, Inc. ALL RIGHTS RESERVED. Dell, Dell Software, the Dell Software logo and products—are identified in this document—are registered trademarks of Dell, Inc. in the U.S.A. and/or other countries. All other trademarks and registered trademarks are property of their respective owners.  
Datasheet-ToadDataPoint-US-KS-24772

