



Updating OME repository using schedule support site option in DRM 2.0

This technical white paper describes about updating OME repository using schedule support site option in DRM 2.0

Dell Engineering
December 2014

Revisions

Date	Description
December 2014	Initial release

THIS WHITE PAPER IS FOR INFORMATIONAL PURPOSES ONLY, AND MAY CONTAIN TYPOGRAPHICAL ERRORS AND TECHNICAL INACCURACIES. THE CONTENT IS PROVIDED AS IS, WITHOUT EXPRESS OR IMPLIED WARRANTIES OF ANY KIND.

© 2014 Dell Inc. All rights reserved. Reproduction of this material in any manner whatsoever without the express written permission of Dell Inc. is strictly forbidden. For more information, contact Dell.

Dell, the DELL logo, and the DELL badge are trademarks of Dell Inc. Other trademarks and trade names may be used in this document to refer to either the entities claiming the marks and names or their products. Dell disclaims any proprietary interest in the marks and names of others.



Table of contents

- Revisions 2
- Acknowledgements 4
- Feedback 4
- Executive summary 5
- 1 Introduction 6
- 2 Purpose and scope..... 7
- 3 Terminology..... 8
- 4 Updating OME repository using DRM 9
 - 4.1 Procedure to Update OME Repository using DRM 9
 - 4.2 Create OME repository using DRM 9
- 5 Additional resources 30



Acknowledgements

This white paper was produced by the following members of the Dell Enterprise Engineering team:

Engineering: Palani Raja , Sindhu Murthy

Editor : Mainak Roy

Feedback

We encourage readers of this publication to provide feedback on the quality and usefulness of this by logging information on [DRM Techcenter](#).



Executive summary

Dell Repository Manager (DRM) is a Windows based application that assists IT Administrators to easily create Repositories of Windows and Linux updates, quickly identify new updates and package them into a format for deployment.

DRM integrates with several Dell provided tools to assist in the creation of a customized Repository of updates.

After a Repository is established, DRM has the ability to assist with identifying when newer updates are available. This paper covers the use of the Scheduled Automatic Search to assist in identifying and gathering new updates as well as receive an email notification.



1 Introduction

Dell Repository Manager (DRM) is an application that allows IT Administrators to easily manage system updates. Dell Repository Manager provides a searchable interface used to create custom software collections.

Basic DRM Terminologies

1. Components: The physical update files, typically in DUP format.
2. Bundle: Groups of Components organized by System Type (R730, T620, VRTX etc...).
3. Repository: A Bundle or Group of bundles.



2 Purpose and scope

The purpose of this whitepaper is to guide the customers who are using OpenManage Essentials (OME), and want to update the OME specific Repository with the latest drivers, BIOS, firmware, and applications. We are going to demonstrate how you can use DRM Schedule Support site feature to automatically update the OME based Repository.



3 Terminology

The following terms will be used throughout this document.

Dell Change Management Terminology

Dell Update Catalog	A metadata file to define all elements of a Dell update repository. The catalog file is in XML format or a .cab file containing a catalog XML file. For Dell server platforms, the Dell online catalog file is Catalog.cab while for Dell business client systems, it is CatalogPC.cab. Dell Repository Manager (Repository Manager) can save a catalog in XML or CAB formats.
Dell Update Package	A self-contained installation package for BIOS, firmware, drivers, and system application software.
Bundle	A virtual concept in a Dell update catalog. A bundle defines a container that contains a group of correlated Dell update packages. The common bundle is system bundle which includes all update packages for one Dell platform. All update packages of a bundle must be defined in the same catalog.
Component	A Dell update package. A component may or may not be contained within one or multiple bundles.
Source (Repository)	A source (repository) refers to a repository which a local repository can inherit bundles and/or components from. A source repository can be assigned by a user. By default, it refers to the Dell online repository which is hosted on ftp.dell.com. A source will be opened as a read-only repository in Dell Repository Manager.
Local Repository	A local repository is created by a Dell Repository Manager user. A local repository data are saved in a local database. The owner of a local repository has full permissions on a local repository.



4 Updating OME repository using DRM

Here, we discuss about the procedure of updating the OME repository using DRM.

4.1 Procedure to Update OME Repository using DRM

1. You can create iDRAC Repository using DRM with discovered models.
2. Go to "Search Dell Support Site" option in "My Repository" tab.
3. Select the repository and then select "Schedule Repository Search" option in the action pane.
4. Select the bundles in the repository.
5. Select the local repository path to save.
6. Schedule the frequency to check for new updates.
7. Configure Email settings, if required.

OME repository updates as per the schedule.

4.2 Create OME repository using DRM



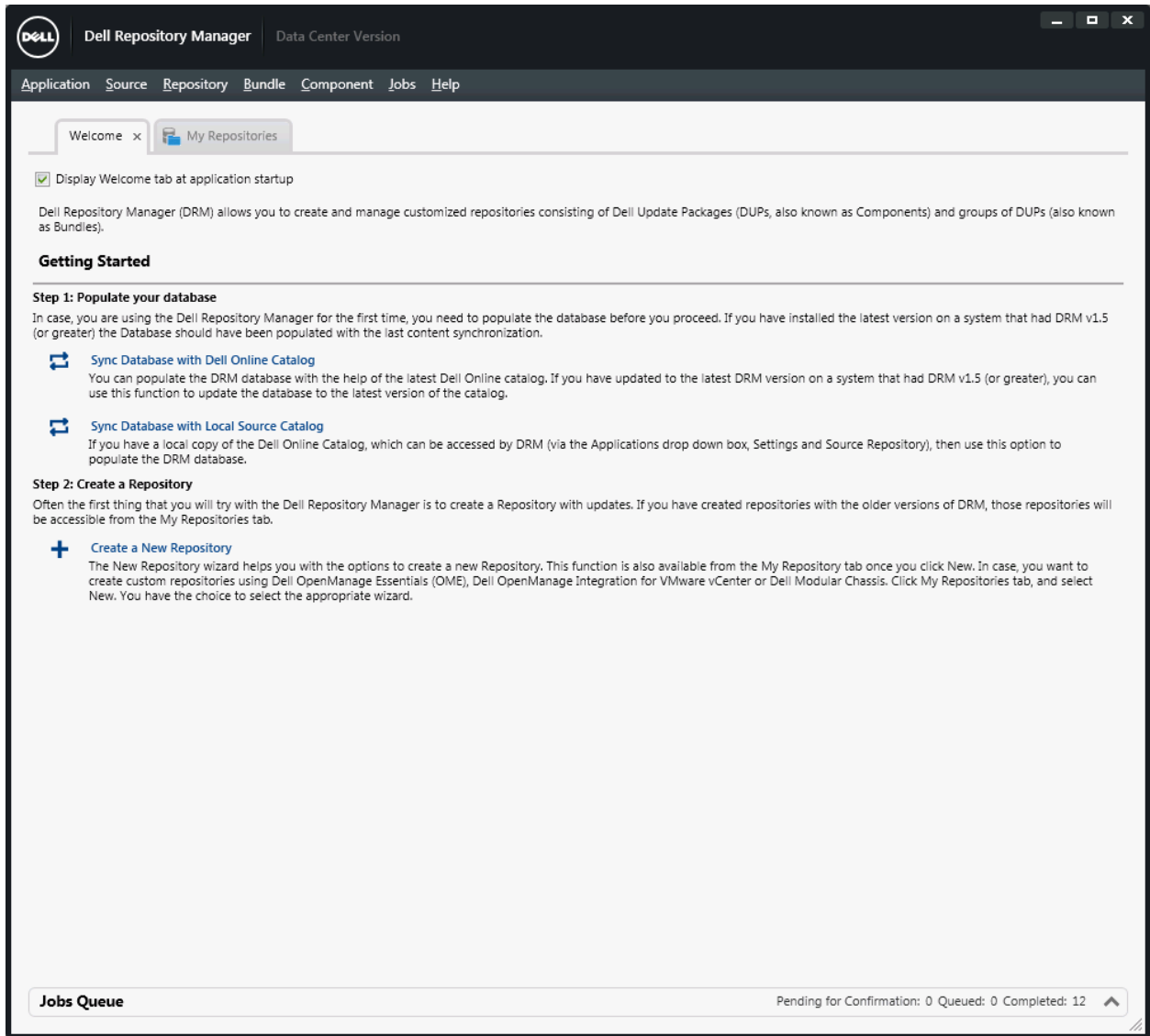


Figure 1 Dell Repository Manager Data Center Version Wizard

From the Start menu, open All Programs and select Dell Repository Manager Data center

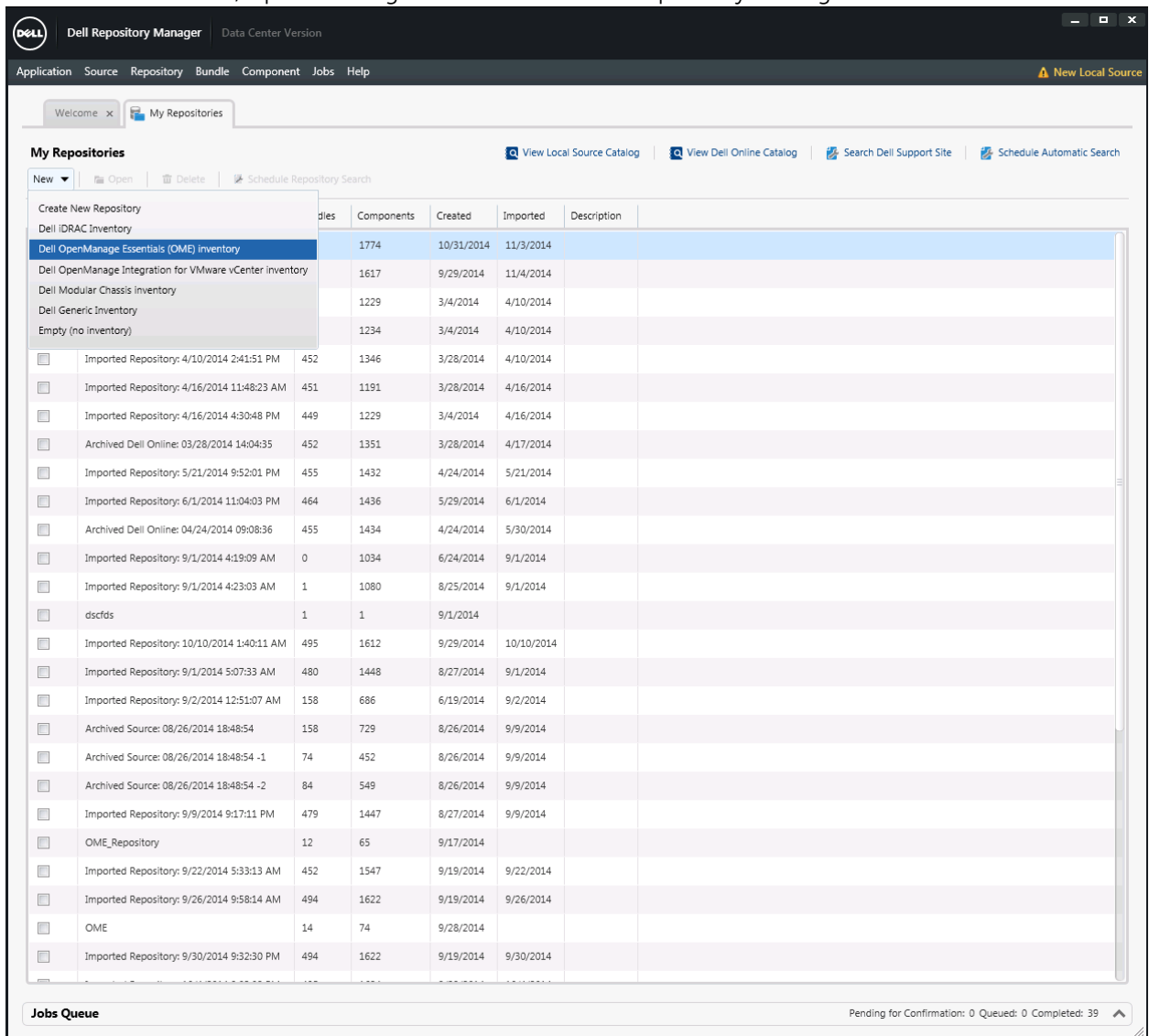


Figure 2 Launch Dell OpenManage Essential Inventory wizard.

Under **New** drop-down menu, select **Dell OpenManage Essential (OME) inventory** option.

Dell Repository Manager | Create Repository for Dell OpenManage Essentials

Name and Description

Base Repository

Connect to OME Server

Summary

Provide a name and description (optional) for the new repository.

Name:

Description:

Cancel | < Back | Next >

Figure 3 Create Repository for Dell OpenManage Essentials Wizard.

Create OME repository by any name.

The screenshot shows a window titled "Dell Repository Manager" with a subtitle "Create Repository for Dell OpenManage Essentials". On the left is a sidebar with a "Name and Description" section containing links for "Base Repository", "Connect to OME Server", and "Summary". The main area is titled "Provide a name and description (optional) for the new repository." It includes a "Name:" label followed by a text input field containing "OME Repository", and a "Description:" label followed by a large, empty text area. At the bottom right, there are three buttons: "Cancel", "< Back", and "Next >".

Figure 4 Create Repository for Dell OpenManage Essentials Wizard.

Click **Next**.

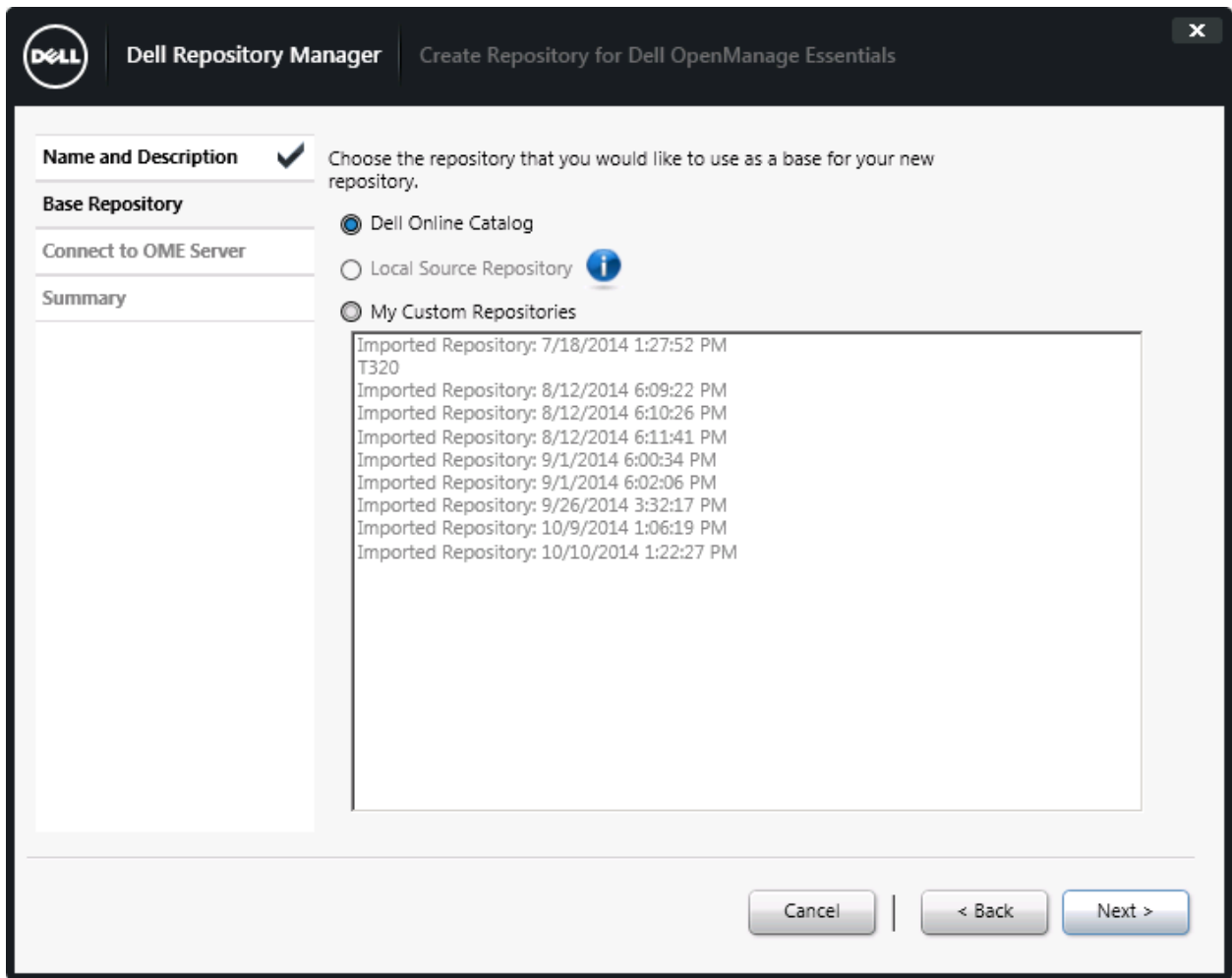


Figure 5 Create Repository for Dell OpenManage Essentials Wizard.

Select **Dell Online Catalog**, and then click **Next**.

Dell Repository Manager | Create Repository for Dell OpenManage Essentials

Name and Description ✓

Base Repository ✓

Connect to OME Server

Summary

Provide the host details to access Dell OpenManage Essentials

Host Name or IP Address: Port Number:

☐ Use different user credentials

User Name:

Password:

System	Model

Connected Host:

New repository will contain:

☐ Latest updates for all devices

☐ Latest updates for only out-of-date devices

|

Figure 6 Create Repository for Dell OpenManage Essentials Wizard.

Provide OME IP or Host details, you can use **User Name** and **Password**, when you are using a differentCredential.

Dell Repository Manager | Create Repository for Dell OpenManage Essentials

Name and Description ✓

Base Repository ✓

Connect to OME Server

Summary

Provide the host details to access Dell OpenManage Essentials

Host Name or IP Address: 192.168.2.39 Port Number: 2607

☒ Use different user credentials

User Name: Administrator

Password:

Reset Connect

System	Model

Connected Host: Resync

New repository will contain:

☐ Latest updates for all devices

☐ Latest updates for only out-of-date devices

Cancel | < Back Next >

Figure 7 Create Repository for Dell OpenManage Essentials Wizard.

After IP or Credentials of the OME server is provided, click **Connect**.

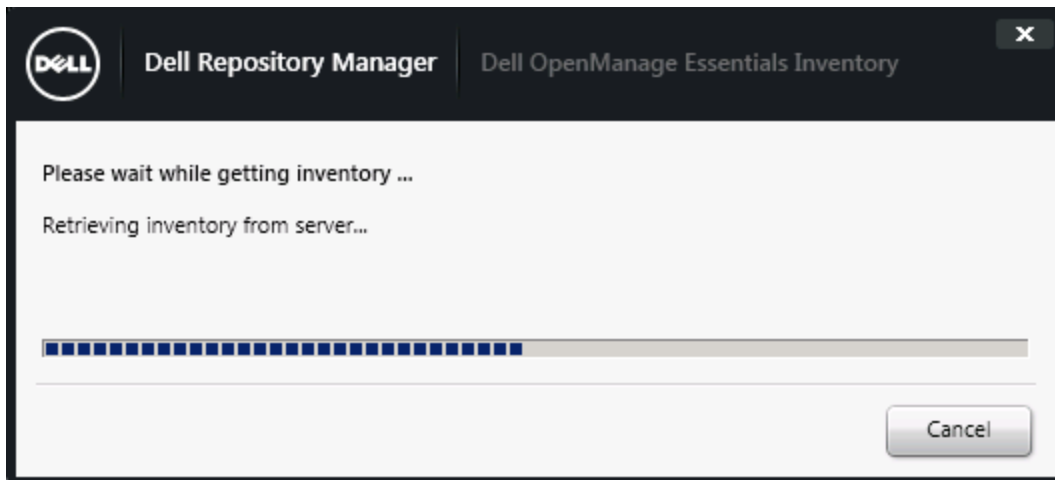


Figure 8 Dell OpenManage Essentials Inventory Wizard.

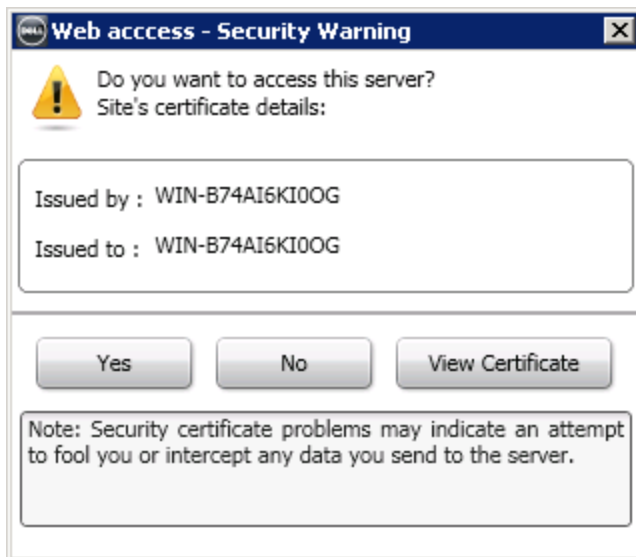


Figure 9 Security Warning Wizard

Click **Yes**.

Dell Repository Manager | Create Repository for Dell OpenManage Essentials

Name and Description ✓

Base Repository ✓

Connect to OME Server

Summary

Provide the host details to access Dell OpenManage Essentials

Host Name or IP Address: 192.168.2.39 Port Number: 2607

☒ Use different user credentials

User Name: Administrator

Password:

Reset Connect

System	Model
Idrac-CZQ7D25	PowerEdge T620
VCENTER5-1	Unknown
Idrac-8DX4F25	Unknown
Idrac-R630PT1	PowerEdge R630
WIN-SP2-ISM	Unknown
WIN-VM4Q6C7OGFB	PowerEdge 2900
10.94.171.73	Unknown

Connected Host: 192.168.2.39 Resync

New repository will contain:

☒ Latest updates for all devices

☐ Latest updates for only out-of-date devices

Cancel | < Back Next >

Figure 10 Create Repository for Dell OpenManage Essentials Wizard.

Discovered machines are listed.

Dell Repository Manager
Create Repository for Dell OpenManage Essentials

Name and Description ✓

Base Repository ✓

Connect to OME Server

Summary

Provide the host details to access Dell OpenManage Essentials

Host Name or IP Address: Port Number:

☒ Use different user credentials

User Name:

Password:

System	Model
idrac-CZQ7D2S	PowerEdge T620
VCENTER5-1	Unknown
idrac-8DX4F2S	Unknown
idrac-R630PT1	PowerEdge R630
WIN-SP2-ISM	Unknown
WIN-VM4Q6C7OGFB	PowerEdge 2900
10.94.171.73	Unknown

Connected Host: 192.168.2.39

New repository will contain:

☒ Latest updates for all devices

☐ Latest updates for only out-of-date devices

|

Figure 11 Create Repository for Dell OpenManage Essentials Wizard.

Click **Next**.

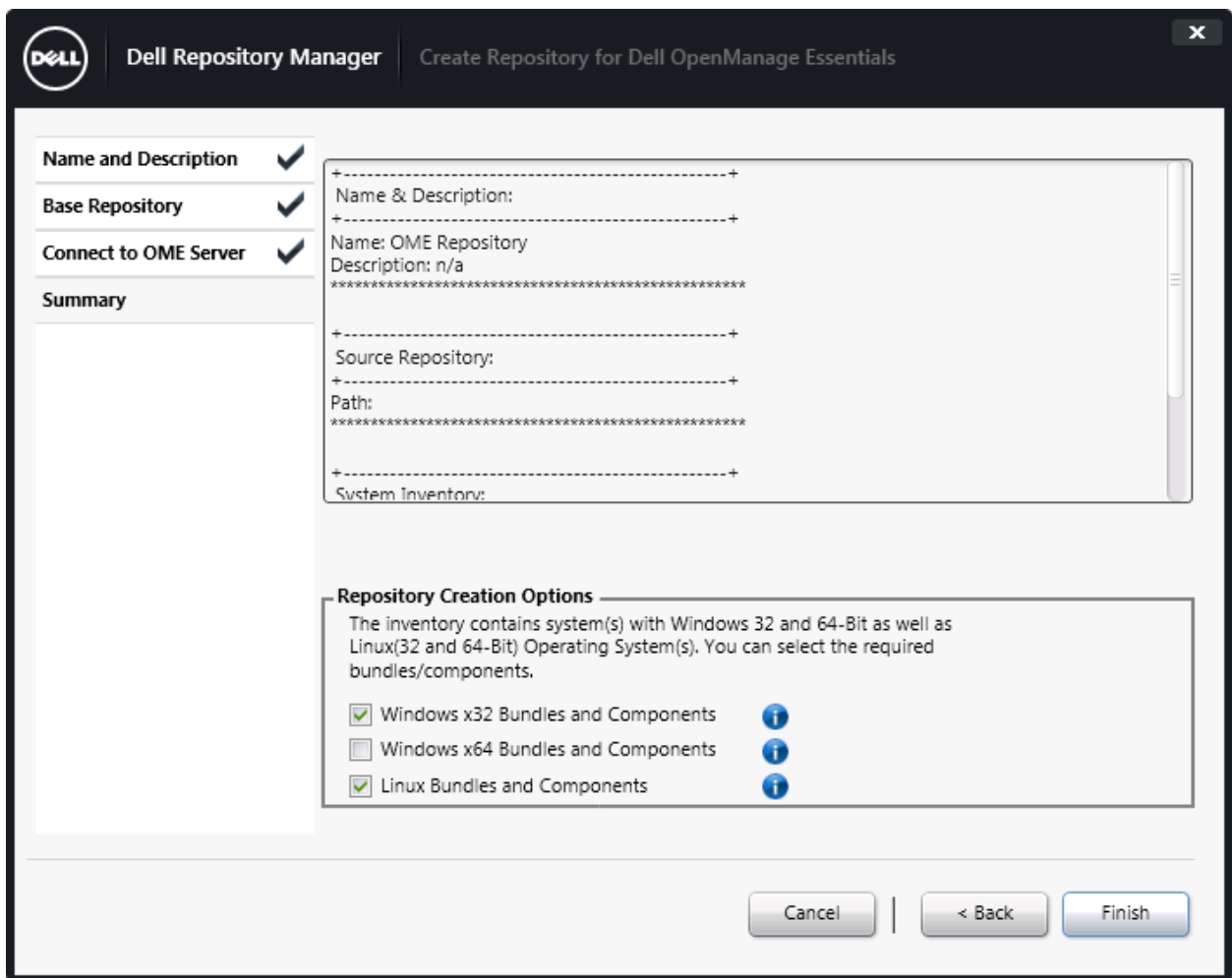


Figure 12 Create Repository for Dell OpenManage Essentials Wizard.

Click **Finish**.

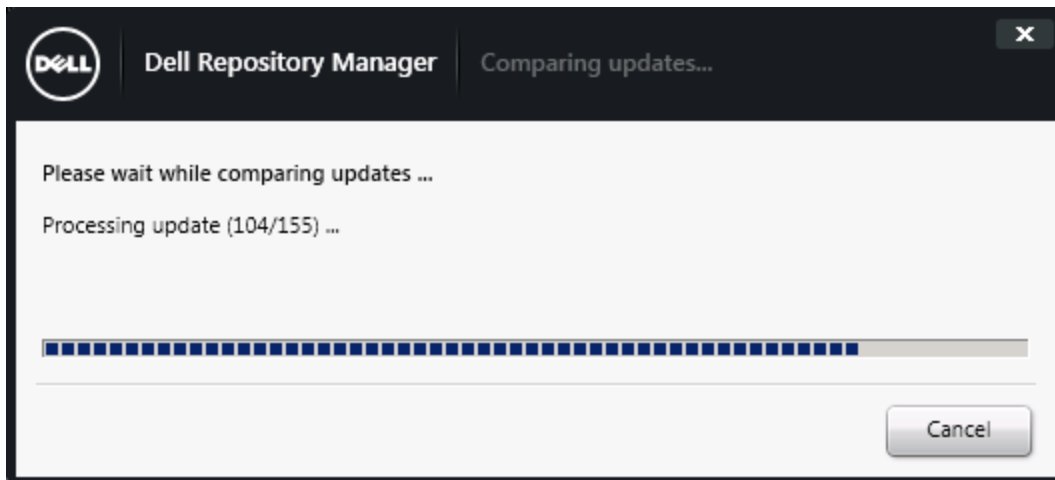


Figure 13 Comparing Updates wizard.

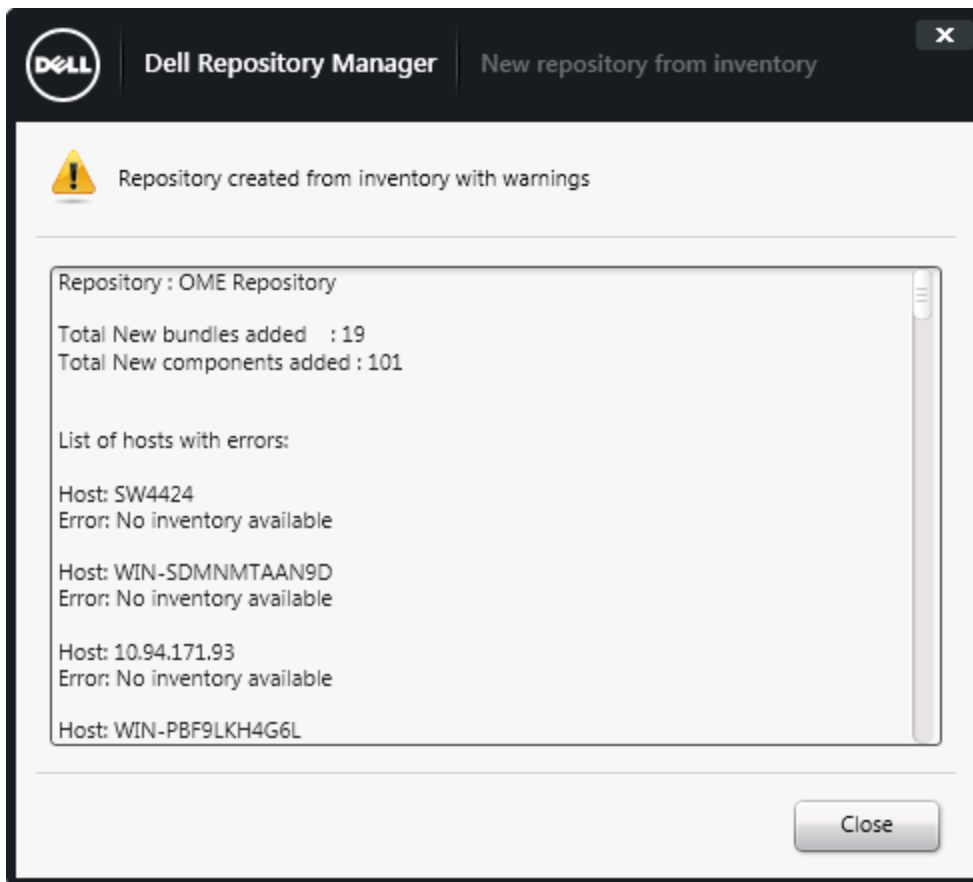


Figure 14 New repository from inventory wizard.

Click **Close**.

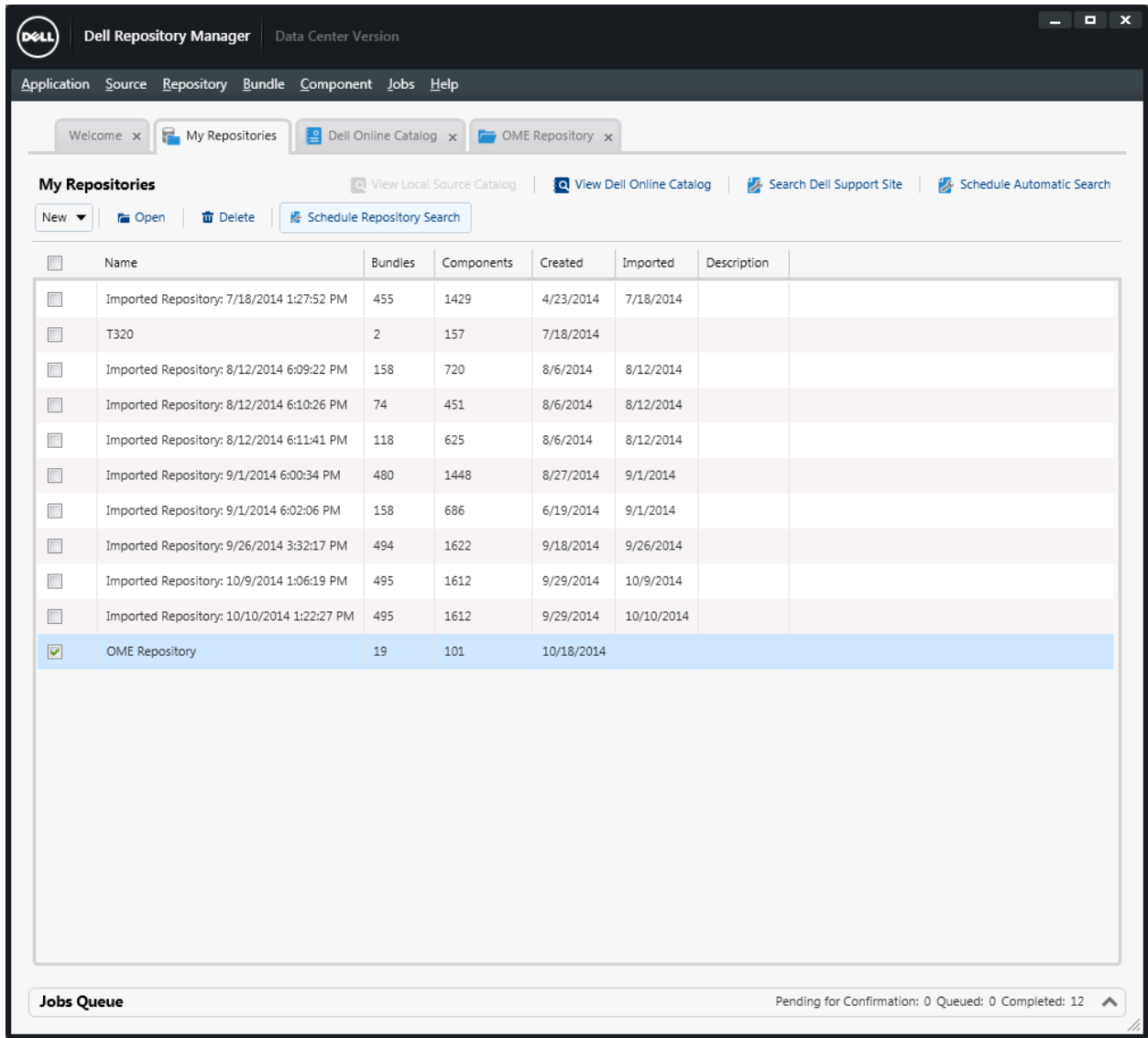


Figure 15 DRM My Repositories wizard.

Select **OME Repository**, and then select **Schedule Repository Search** option in Action pane.

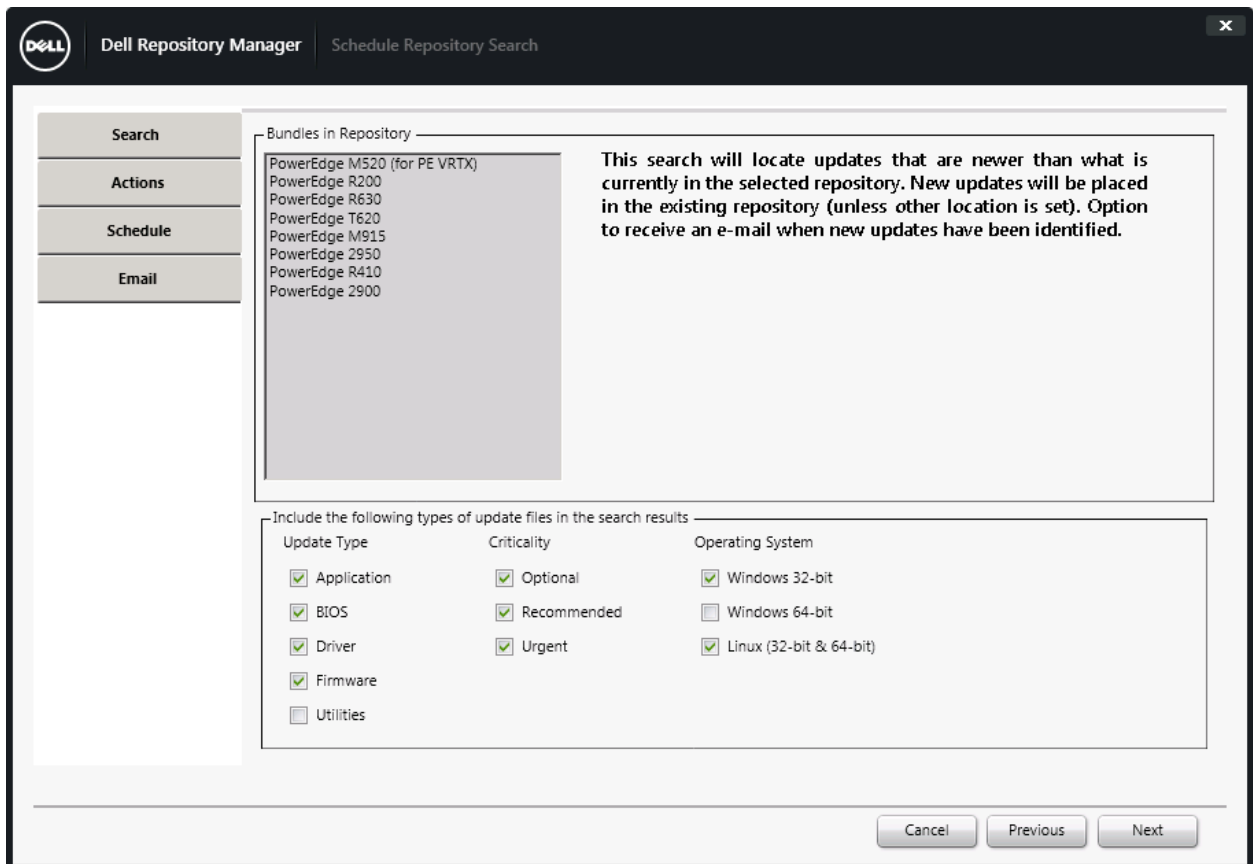


Figure 16 Schedule Repository Search Wizard.

Click **Next**.

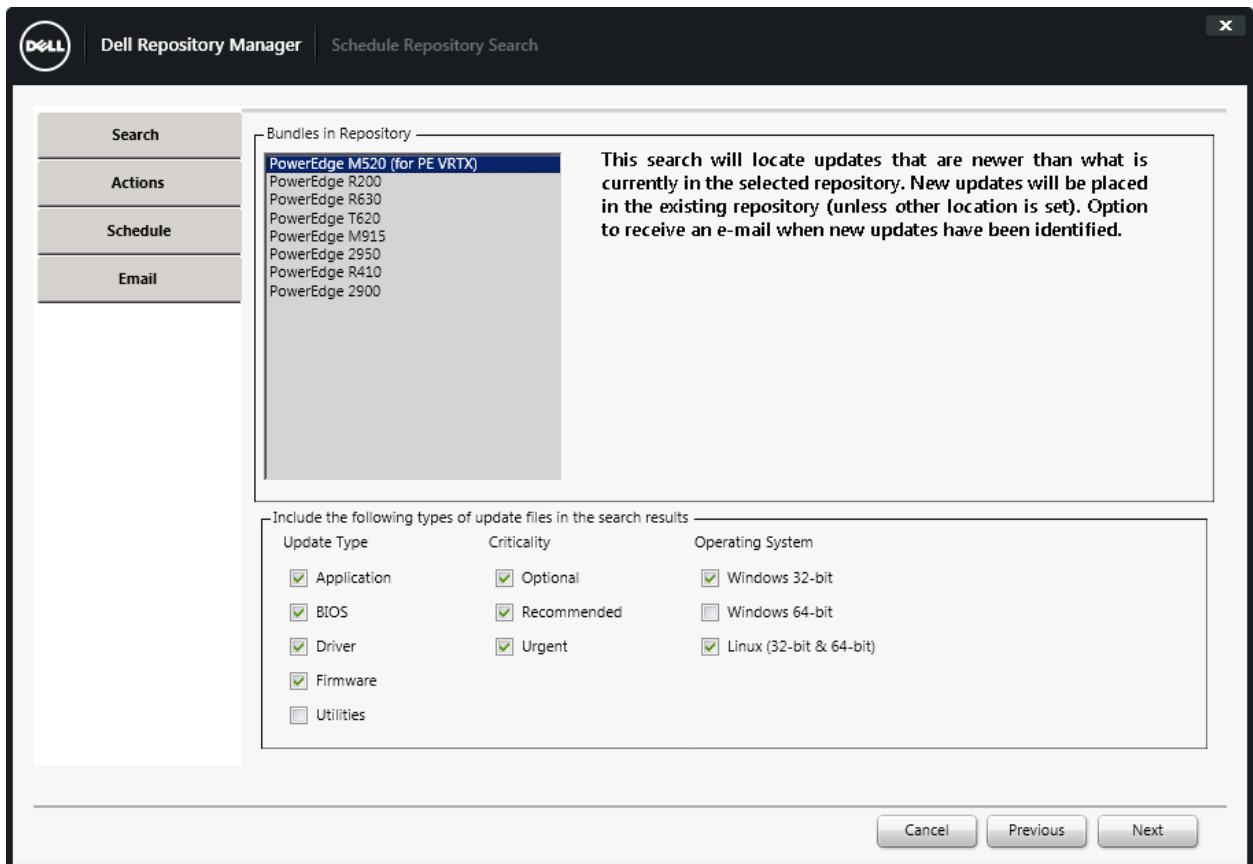


Figure 17 Schedule Repository Search Wizard.

Click **Next**.

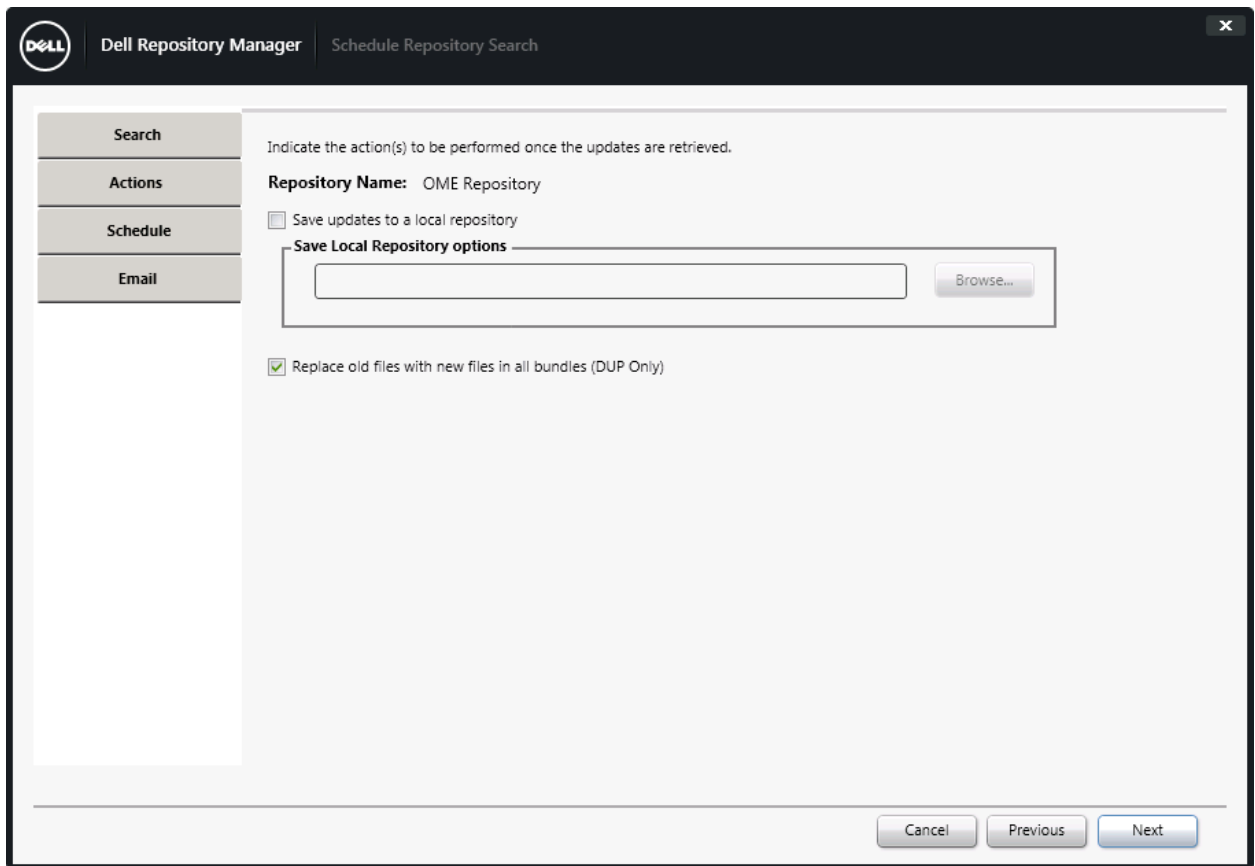


Figure 18 Schedule Repository Search Wizard.

Click **Next**.

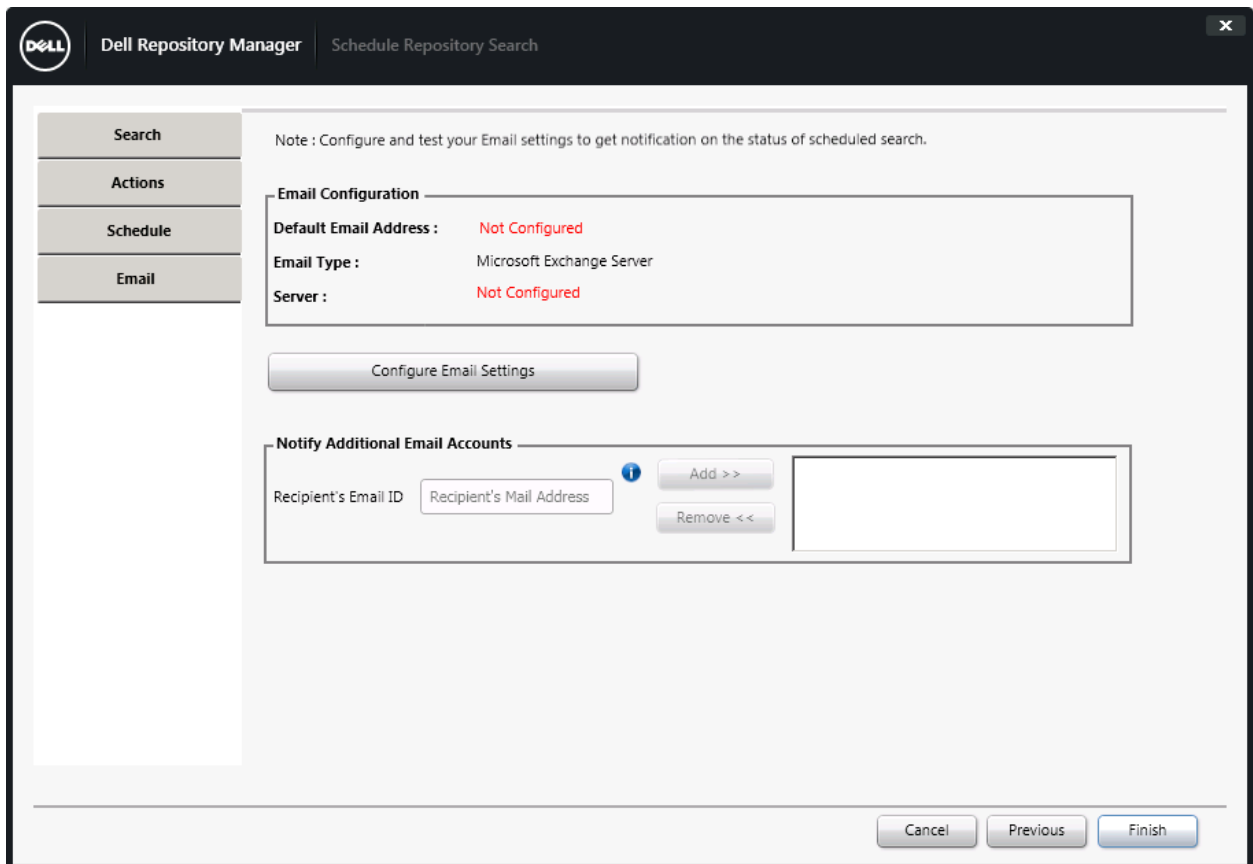



Figure 19 Schedule Repository Search Wizard.

Click **Finish**.


Dell Repository Manager
Email Settings
✕

Email Type

☒ SMTP ⓘ
 ☐ Microsoft Exchange ⓘ

NOTE: Provide email particulars to receive email notification for new updates.

Configuration Fields

Sender Details

☐ Use Anonymous authentication ⓘ

Email ID

User Name

Password

Domain ⓘ

SMTP Options

SMTP Server


Port Number

Proxy Server

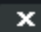
☐ Bypass Proxy ⓘ
 ☐ Use SSL ⓘ

Figure 20 Email settings wizard.

Use SMTP server IP and credential details to configure SMTP.

 Dell Repository Manager

Email Settings



Email Type

☐ SMTP

☒ Microsoft Exchange

NOTE: Provide email particulars to receive email notification for new updates.

Configuration Fields

Sender Details

☐ Use Default Credentials

Email ID

Sender's Email Address

User Name

User Name

Password

Domain

Domain

MS Exchange Options

☐ Autodiscover URL

MS Exchange URL

MS Exchange Server URL

MS Exchange Version

Exchange2007_SP1

Check Availability

Send Test Email

Cancel


Save

Figure 21 Email Settings wizard.

Use Microsoft Exchange Email ID and credential details to configure Microsoft Exchange email.

28

Updating OME repository using schedule support site option in DRM 2.0



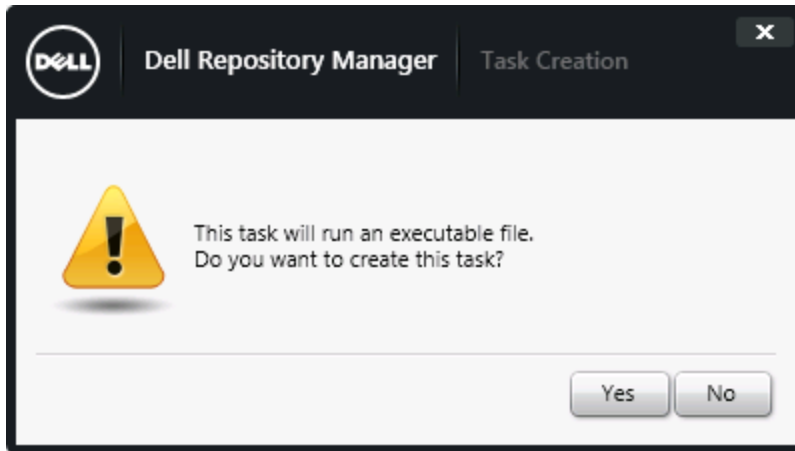


Figure 22 Task Creation Wizard.

Click **Yes**.

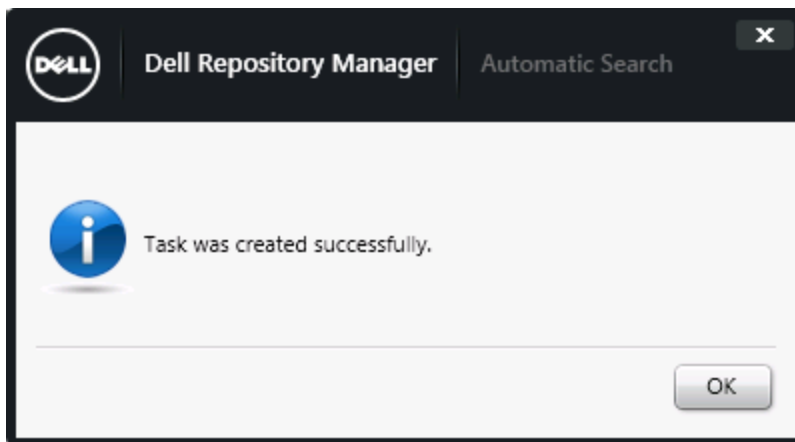


Figure 23 Automatic Search Wizard.

Click **OK**.

5 Additional resources

Support.dell.com is focused on meeting your needs with proven services and support.

DellTechCenter.com is an IT Community, where you can connect with Dell Customers and Dell employees for the purpose of sharing knowledge, best practices, and information about Dell products and installations.

Referenced or recommended Dell publications:

- Install Guide :
http://www.dell.com/support/home/us/en/19/Products/software/ent_sys_mgmt/ent_sys_mgmt_repository_mgr
- User Guide
http://www.dell.com/support/home/us/en/19/Products/software/ent_sys_mgmt/ent_sys_mgmt_repository_mgr
- Reference Guide:
http://www.dell.com/support/home/us/en/19/Products/software/ent_sys_mgmt/ent_sys_mgmt_repository_mgr
- Dell Repository Manager: Tech center:
<http://en.community.dell.com/techcenter/systems-management/w/wiki/1767.dell-repository-manager>
- Dell Repository Manager: Whitepapers
<http://en.community.dell.com/techcenter/systems-management/w/wiki/5103.dell-repository-manager-white-papers>

