

# Dell UPS Management Software

An enterprise-class monitoring solution with dependable Dell support

Dell™ UPS Management Software incorporates two important applications for managing Dell UPS units through a single, Web-based interface:

- **The Dell Multi UPS Management Console (MUMC):**  
Designed for multi-host server environments, Dell's console facilitates easy and versatile monitoring and management across the network from a single interface.
- **The Dell UPS Local Network Manager (ULNM):**  
Created for single-host environments, Dell's network manager provides graceful, automatic shutdown of any UPS, load segment or connected device during prolonged power disruptions, preventing data loss and saving work-in-progress.

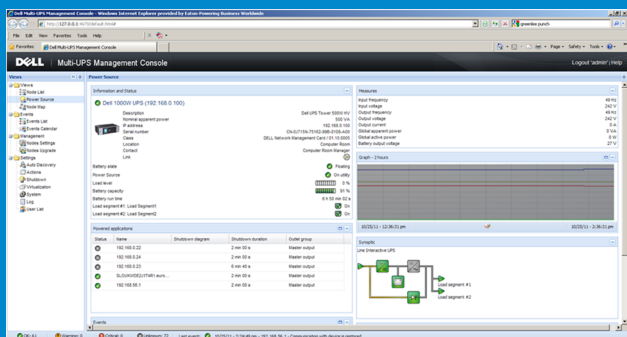
Use each software application independently or as a powerful combination together. The Dell UPS, MUMC and ULNM provide comprehensive power management for optimized availability and data integrity.

When it comes to managing power on the network, one missed anomaly or malfunctioning power device can bring everything to a halt. Keeping an eye on the status of power devices across the network, and intervening before a power event cascades into a catastrophe, is top priority.

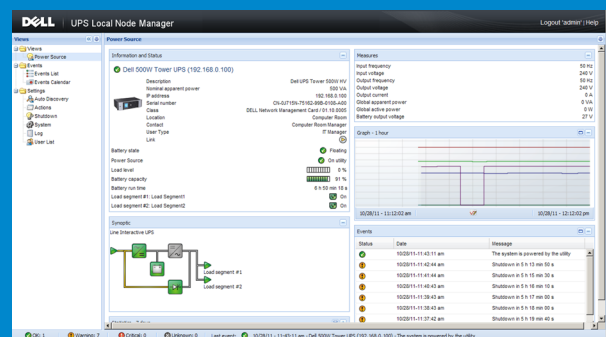
## Benefits of Dell Multi UPS Management Console

A complete set of capabilities is provided with MUMC:

- Ability to monitor and manage multiple power and environmental devices from any Internet browser or vCenter dashboard
- User-definable tree structure enables grouping, access and management of multiple devices across multiple locations
- Option to view groups or similar devices and all alerts from a single interface
- Auto discovery provides fast installation by automatically detecting devices on the network
- Ability to perform a mass upgrade of firmware reduces network management card setup and maintenance time
- Shutdown agent management enables safe shutdown of servers
- Power device asset management tracks moves, adds and changes of equipment
- SNMP devices are visible and their individual Web interfaces are accessible for editing and configuration
- Multiple password-protected access levels and support provide secure communications
- All the functionality of an enterprise-class monitoring solution is included for free or at a fraction of the cost
- Support for up to 32 UPS systems is included at no charge; additional capacity may be purchased



Dell Multi UPS Management Console



Dell UPS Local Network Manager

## UPS Local Network Manager for single host environments

Most UPS applications are designed to protect your network devices from power anomalies, including surges, sags and frequency variations. However, when the power goes out for longer than the available battery runtime, ULNM software facilitates automatic, graceful shutdown of computers, servers and network devices powered by a UPS, saving all work-in-progress and ensuring data integrity.

Dell UPS Local Network Manager provides the following capabilities:

- Helps avoid data loss by automatically shutting down computers and virtual machines/servers powered by a Dell UPS during an extended power outage
- Allows access through an easy-to-use interface from any PC with a Web browser
- Acquires UPS information through local or network communication and can be easily deployed on many computers
- Can be remotely managed, configured and updated with the Dell Multi UPS Management software
- Communicates with the protected device directly (by USB) or through the network (using a Web/SNMP card)

Dell UPS management software's integration with vCenter helps reduce infrastructure and operating costs while increasing productivity and operational responsiveness.

## Unique virtualization application capabilities of Dell UPS Management Software

Designed with virtualization in mind, Dell UPS Management Software can easily:

- Integrate with industry-leading enterprise solutions from VMware, Microsoft and Citrix
- Manage virtual machine shutdown without installing software on each virtual machine
- Manage virtual machine start/stop profiles through plug-ins like VMware® vCenter™ (VMware only)
- Manage all virtual machines across a network from a single management interface
- Use advanced virtualization functions like vMotion™ and LiveMigration to move virtual machines to a recovery site in a power failure
- Can be remotely managed, configured and updated with the Dell Multi UPS Management software
- Communicates with the protected device directly (by USB) or through the network (using a Web/SNMP card)

Dell Multi UPS Management Console <sup>1</sup>	Dell UPS Local Network Manager <sup>2</sup>
<b>Web browsers supported</b>	
Google Chrome™ 4 and 5; Mozilla Firefox® 3.0, 3.5 and 3.6; Microsoft® Internet Explorer® 6, 7 and 8; Opera™ 10	
<b>Platforms supported</b>	
Microsoft Windows Server® 2008 (R1 Standard, Enterprise, Datacenter; R2 Standard, Enterprise, Datacenter; Small Business Server R2; R2 Foundation); Windows Server 2003 (Standard, Enterprise R1; Standard Enterprise R2; Small Business); Windows 7 (Professional, Enterprise, Ultimate); Windows Vista (Business, Enterprise); Windows XP Professional; Windows 2000 Professional	
	Red Hat® Enterprise Linux® (RHEL) 6 (latest update); Advanced Platform 5.4 (latest update); Base Server 5.4 (latest update), versions 5 and 6
	Novell® SUSE® Linux® Enterprise Server 11 (latest SP)
	Debian® GNU/Linux 5.0 (Lenny)
	Ubuntu® 10.04
<b>Virtual environments supported</b>	
VMware® vSphere™ ESXi™, vCenter™, vMotion™	VMware ESX 4; ESXi 4 (pay version only); ESXi 4.1; ESXi 4.1 (pay version only)
Microsoft Hyper-V®, SCVMM, LiveMigration	Microsoft Hyper-V Server 2008; Hyper-V Server 2008 R2
	Citrix XenServer 5.6
	OpenSource Xen® 2.6 on RHEL 5
	KVM 0.12.12 on RHEL 6 or Debian 5.0
<b>UPS models supported</b>	
All Dell UPS models	

<sup>1</sup>To avoid network access conflicts, do not install the Dell MUMC on a machine that also hosts a Network Management System (for example, HP Openview™, CA™ Unicenter™), ULNM, Eaton® Intelligent Power Protector, Eaton Enterprise Power Manager, Eaton Network Shutdown Module and the Network Management Proxy.

<sup>2</sup>To avoid network or serial port access conflicts, do not install the Dell ULNM on a machine that also hosts Dell MUMC, Eaton Intelligent Power Manager or Eaton Enterprise Power Manager, Eaton Network Shutdown Module, Network Management Proxy, Personal Solution Pac, LanSafe and LanSafe Web View and Netwatch.

Learn More at [Dell.com/PowerEdge/Rack](http://Dell.com/PowerEdge/Rack)

© 2011 Dell Inc. All rights reserved. Dell, the DELL logo, and the DELL badge are trademarks of Dell Inc. Other trademarks and trade names may be used in this document to refer to either the entities claiming the marks and names or their products. Dell disclaims proprietary interest in the marks and names of others. This document is for informational purposes only. Dell reserves the right to make changes without further notice to any products herein. The content provided is as is and without express or implied warranties of any kind.

